

HIGHLIGHTS OF PRESCRIBING INFORMATION

These highlights do not include all the information needed to use ZEPZELCA safely and effectively. See full prescribing information for ZEPZELCA.

ZEPZELCA™ (turbinetedtin) for injection, for intravenous use
Initial U.S. Approval: 2020

INDICATIONS AND USAGE

ZEPZELCA is an alkylating drug indicated for the treatment of adult patients with metastatic small cell lung cancer (SCLC) with disease progression on or after platinum-based chemotherapy. (1)

This indication is approved under accelerated approval based on overall response rate and duration of response. Continued approval for this indication may be contingent upon verification and description of clinical benefit in a confirmatory trial(s). (1)

DOSAGE AND ADMINISTRATION

- Recommended dosage: 3.2 mg/m² every 21 days. (2.1)
- Administer ZEPZELCA as an intravenous infusion over 60 minutes. (2.1)
- Consider premedication with corticosteroids and serotonin antagonists. (2.3)

DOSAGE FORMS AND STRENGTHS

For injection: 4 mg lyophilized powder in a single-dose vial. (3)

CONTRAINDICATIONS

None. (4)

WARNINGS AND PRECAUTIONS

- Myelosuppression: Monitor blood counts prior to each administration. Initiate treatment with ZEPZELCA only if baseline neutrophil count is \geq 1,500 cells/mm³ and platelet count is \geq 100,000/mm³. Withhold, reduce the dose, or permanently discontinue ZEPZELCA based on severity. (2.2, 5.1)

- Hepatotoxicity: Monitor liver function tests prior to initiating ZEPZELCA, periodically during treatment and as clinically indicated. Withhold, reduce the dose, or permanently discontinue ZEPZELCA based on severity. (2.2, 5.2)
- Embryo-Fetal Toxicity: Can cause fetal harm. Advise females and males of reproductive potential of the potential risk to a fetus and to use an effective method of contraception. (5.3)

ADVERSE REACTIONS

The most common adverse reactions, including laboratory abnormalities, (\geq 20%) are leukopenia, lymphopenia, fatigue, anemia, neutropenia, increased creatinine, increased alanine aminotransferase, increased glucose, thrombocytopenia, nausea, decreased appetite, musculoskeletal pain, decreased albumin, constipation, dyspnea, decreased sodium, increased aspartate aminotransferase, vomiting, cough, decreased magnesium and diarrhea. (6.1)

To report SUSPECTED ADVERSE REACTIONS, contact Jazz Pharmaceuticals, Inc. at 1-800-520-5568 or FDA at 1-800-FDA-1088 or www.fda.gov/medwatch.

DRUG INTERACTIONS

- Strong or moderate CYP3A inhibitors: Avoid coadministration. (7.1)
- Strong or moderate CYP3A inducers: Avoid coadministration. (7.1)

USE IN SPECIFIC POPULATIONS

Lactation: Advise not to breastfeed. (8.2)

See 17 for PATIENT COUNSELING INFORMATION and FDA-approved patient labeling.

Revised 6/2020

FULL PRESCRIBING INFORMATION: CONTENTS*

1	INDICATIONS AND USAGE	8.3	Females and Males of Reproductive Potential
2	DOSAGE AND ADMINISTRATION	8.4	Pediatric Use
2.1	Recommended Dosage	8.5	Geriatric Use
2.2	Dosage Modifications for Adverse Reactions	8.6	Hepatic Impairment
2.3	Premedication	11	DESCRIPTION
2.4	Preparation, Administration and Storage	12	CLINICAL PHARMACOLOGY
3	DOSAGE FORMS AND STRENGTHS	12.1	Mechanism of Action
4	CONTRAINDICATIONS	12.2	Pharmacodynamics
5	WARNINGS AND PRECAUTIONS	12.3	Pharmacokinetics
5.1	Myelosuppression	13	NONCLINICAL TOXICOLOGY
5.2	Hepatotoxicity	13.1	Carcinogenesis, Mutagenesis, Impairment of Fertility
5.3	Embryo-Fetal Toxicity	14	CLINICAL STUDIES
6	ADVERSE REACTIONS	15	REFERENCES
6.1	Clinical Trials Experience	16	HOW SUPPLIED/STORAGE AND HANDLING
7	DRUG INTERACTIONS	17	PATIENT COUNSELING INFORMATION
7.1	Effect of Other Drugs on ZEPZELCA		
8	USE IN SPECIFIC POPULATIONS		
8.1	Pregnancy		
8.2	Lactation		

*Sections or subsections omitted from the full prescribing information are not listed.

FULL PRESCRIBING INFORMATION

1 INDICATIONS AND USAGE

ZEPZELCA is indicated for the treatment of adult patients with metastatic small cell lung cancer (SCLC) with disease progression on or after platinum-based chemotherapy.

This indication is approved under accelerated approval based on overall response rate and duration of response [see *Clinical Studies (14)*]. Continued approval for this indication may be contingent upon verification and description of clinical benefit in a confirmatory trial(s).

2 DOSAGE AND ADMINISTRATION

2.1 Recommended Dosage

The recommended dosage of ZEPZELCA is 3.2 mg/m² by intravenous infusion over 60 minutes every 21 days until disease progression or unacceptable toxicity.

Initiate treatment with ZEPZELCA only if absolute neutrophil count (ANC) is at least 1,500 cells/mm³ and platelet count is at least 100,000/mm³.

2.2 Dosage Modifications for Adverse Reactions

The recommended dose reductions for adverse reactions are listed in Table 1. Permanently discontinue ZEPZELCA in patients who are unable to tolerate 2 mg/m² or require a dose delay greater than two weeks.

Table 1: Dose Reduction for ZEPZELCA for Adverse Reactions

Dose Reduction	Total Dose
First	2.6 mg/m ² every 21 days
Second	2 mg/m ² every 21 days

Dosage modifications for ZEPZELCA for adverse reactions are presented in Table 2.

Table 2: Dosage Modifications for ZEPZELCA for Adverse Reactions

Adverse Reaction	Severity ^a	Dosage Modification
Neutropenia ^b [see <i>Warnings and Precautions (5.1)</i>]	Grade 4 or Any grade febrile neutropenia	<ul style="list-style-type: none">Withhold ZEPZELCA until Grade ≤ 1Resume ZEPZELCA at a reduced dose
Thrombocytopenia	Grade 3 with bleeding or	<ul style="list-style-type: none">Withhold ZEPZELCA until platelet ≥ 100,000/mm³

[see Warnings and Precautions (5.1)]	Grade 4	<ul style="list-style-type: none"> • Resume ZEPZELCA at reduced dose
Hepatotoxicity [see Warnings and Precautions (5.2)] and other adverse reactions	Grade 2	<ul style="list-style-type: none"> • Withhold ZEPZELCA until Grade ≤ 1 • Resume ZEPZELCA at same dose
	Grade ≥ 3	<ul style="list-style-type: none"> • Withhold ZEPZELCA until Grade ≤ 1 • Resume ZEPZELCA at reduced dose

^aNational Cancer Institute Common Terminology Criteria for Adverse Events (NCI CTCAE) version 4.0.

^bPatients with isolated Grade 4 neutropenia (neutrophil count less than 500 cells/mm³) may receive G-CSF prophylaxis rather than undergo lurbinctedin dose reduction.

2.3 Premedication

Consider administering the following pre-infusion medications for antiemetic prophylaxis [see [Adverse Reactions \(6.1\)](#)]:

- Corticosteroids (dexamethasone 8 mg intravenously or equivalent)
- Serotonin antagonists (ondansetron 8 mg intravenously or equivalent)

2.4 Preparation, Administration and Storage

ZEPZELCA is a hazardous drug. Follow applicable special handling and disposal procedures¹.

Preparation and Administration

- Inject 8 mL of Sterile Water for Injection USP into the vial, yielding a solution containing 0.5 mg/mL lurbinctedin. Shake the vial until complete dissolution.
- Visually inspect the solution for particulate matter and discoloration. The reconstituted solution is a clear, colorless or slightly yellowish solution, essentially free of visible particles.
- Calculate the required volume of reconstituted solution as follows:

$$\text{Volume (mL)} = \frac{\text{Body Surface Area (m}^2\text{)} \times \text{Individual Dose (mg/m}^2\text{)}}{0.5 \text{ mg/mL}}$$
- For administration through a central venous line, withdraw the appropriate amount of reconstituted solution from the vial and add to an infusion container containing at least 100 mL of diluent (0.9% Sodium Chloride Injection USP or 5% Dextrose Injection USP).

- For administration through a peripheral venous line, withdraw the appropriate amount of reconstituted solution from the vial and add to an infusion container containing at least 250 mL of diluent (0.9% Sodium Chloride Injection USP or 5% Dextrose Injection USP).
- Parenteral drug products should be inspected visually for particulate matter and discoloration prior to administration, whenever solution and container permit. If particulate matter is observed, do not administer.

Storage of Infusion Solution

- If not used immediately after reconstitution or dilution, the ZEPZELCA solution can be stored prior to administration for up to 24 hours following reconstitution, including infusion time, at either room temperature/ ambient light or under refrigeration at **2°C-8°C (36°F-46°F)** conditions.

3 DOSAGE FORMS AND STRENGTHS

For injection: 4 mg of lurbinectedin as a sterile, preservative-free, white to off-white lyophilized powder in a single-dose vial for reconstitution prior to intravenous infusion.

4 CONTRAINDICATIONS

None.

5 WARNINGS AND PRECAUTIONS

5.1 Myelosuppression

ZEPZELCA can cause myelosuppression.

In clinical studies of 554 patients with advanced solid tumors receiving ZEPZELCA [see *Adverse Reactions (6.1)*], Grade 3 or 4 neutropenia occurred in 41% of patients, with a median time to onset of 15 days and a median duration of 7 days. Febrile neutropenia occurred in 7% of patients. Sepsis occurred in 2% of patients and was fatal in 1% (all cases occurred in patients with solid tumors other than SCLC). Grade 3 or 4 thrombocytopenia occurred in 10%, with a median time to onset of 10 days and a median duration of 7 days. Grade 3 or 4 anemia occurred in 17% of patients.

Administer ZEPZELCA only to patients with baseline neutrophil count of at least 1,500 cells/mm³ and platelet count of at least 100,000/mm³. Monitor blood counts including neutrophil count and platelet count prior to each administration. For neutrophil count less than 500 cells/mm³ or any value less than lower limit of normal, the use of G-CSF is recommended. Withhold, reduce the dose, or permanently discontinue ZEPZELCA based on severity [see *Dosage and Administration (2.2)*].

5.2 Hepatotoxicity

ZEPZELCA can cause hepatotoxicity.

In clinical studies of 554 patients with advanced solid tumors receiving ZEPZELCA [see *Adverse Reactions (6.1)*], Grade 3 elevations of ALT and AST were observed in 6% and 3% of patients, respectively, and Grade 4 elevations of ALT and AST were observed in 0.4% and 0.5% of patients, respectively. The median time to onset of Grade ≥ 3 elevation in transaminases was 8 days (range: 3 to 49), with a median duration of 7 days.

Monitor liver function tests, prior to initiating ZEPZELCA, periodically during treatment, and as clinically indicated. Withhold, reduce the dose, or permanently discontinue ZEPZELCA based on severity [see *Dosage and Administration (2.2)*].

5.3 Embryo-Fetal Toxicity

Based on animal data and its mechanism of action ZEPZELCA can cause fetal harm when administered to a pregnant woman. Intravenous administration of a single dose of lurbinectedin (approximately 0.2 times the 3.2 mg/m² clinical dose) to pregnant animals during the period of organogenesis caused 100% embryoletality in rats. Advise pregnant women of the potential risk to a fetus. Advise female patients of reproductive potential to use effective contraception during treatment with ZEPZELCA and for 6 months after the final dose. Advise male patients with female partners of reproductive potential to use effective contraception during treatment with ZEPZELCA and for 4 months after the final dose [see *Use in Specific Populations (8.1, 8.3)*].

6 ADVERSE REACTIONS

The following clinically significant adverse reactions are described elsewhere in the labeling:

- Myelosuppression [see *Warnings and Precautions (5.1)*]
- Hepatotoxicity [see *Warnings and Precautions (5.2)*]

6.1 Clinical Trials Experience

Because clinical trials are conducted under widely varying conditions, adverse reaction rates observed in the clinical trials of a drug cannot be directly compared to rates in the clinical trials of another drug and may not reflect the rates observed in practice.

The pooled safety population described in the WARNINGS AND PRECAUTIONS reflects exposure to ZEPZELCA as a single agent at a dose of 3.2 mg/m² intravenously every 21 days in 554 patients with advanced solid tumors. Among 554 patients who received ZEPZELCA, including 105 patients with small cell lung cancer (SCLC) in PM1183-B-005-14 (Study B-005), 24% were exposed for 6 months or longer and 5% were exposed for greater than one year.

Small Cell Lung Cancer (SCLC)

The safety of ZEPZELCA was evaluated in a cohort of 105 patients with previously treated SCLC in Study B-005 [see *Clinical Studies (14)*]. Patients received ZEPZELCA 3.2 mg/m² intravenously every 21 days. All patients in this study received a pre-specified anti-emetic regimen consisting of a corticosteroid and serotonin antagonist. Patients could receive G-CSF for secondary prophylaxis (i.e., after patients had an initial decrease in WBC), but not primary prophylaxis. Among patients who received ZEPZELCA, 29% were exposed for 6 months or longer and 6% were exposed for greater than one year.

Serious adverse reactions occurred in 34% of patients who received ZEPZELCA. Serious adverse reactions in $\geq 3\%$ of patients included pneumonia, febrile neutropenia, neutropenia, respiratory tract infection, anemia, dyspnea, and thrombocytopenia.

Permanent discontinuation due to an adverse reaction occurred in two patients (1.9%) who received ZEPZELCA. Adverse reactions resulting in permanent discontinuation in $\geq 1\%$ of patients who received ZEPZELCA, which included peripheral neuropathy and myelosuppression.

Dosage interruptions due to an adverse reaction occurred in 30.5% of patients who received ZEPZELCA. Adverse reactions requiring dosage interruption in $\geq 3\%$ of patients who received ZEPZELCA included neutropenia, and hypoalbuminemia.

Dose reductions due to an adverse reaction occurred in 25% of patients who received ZEPZELCA. Adverse reactions requiring dosage reductions in $\geq 3\%$ of patients who received ZEPZELCA included neutropenia, febrile neutropenia and fatigue.

The most common adverse reactions, including laboratory abnormalities, ($\geq 20\%$) were leukopenia, lymphopenia, fatigue, anemia, neutropenia, increased creatinine, increased alanine aminotransferase, increased glucose, thrombocytopenia, nausea, decreased appetite, musculoskeletal pain, decreased albumin, constipation, dyspnea, decreased sodium, increased aspartate aminotransferase, vomiting, cough, decreased magnesium and diarrhea.

Table 3 summarizes the adverse reactions in the SCLC cohort of Study B-005.

Table 3: Adverse Reactions ($\geq 10\%$) in Patients With SCLC Who Received ZEPZELCA in Study B-005

Adverse Reaction	ZEPZELCA (n=105)	
	All Grades ^{a,b} (%)	Grades 3-4 (%)
General disorders		
Fatigue	77	12
Pyrexia	13	0
Chest pain	10	0
Gastrointestinal disorders		
Nausea	37	0
Constipation	31	0
Vomiting	22	0
Diarrhea	20	4
Abdominal pain ^c	11	1
Musculoskeletal and connective tissue disorders		
Musculoskeletal pain ^d	33	4
Metabolism and nutrition disorders		
Decreased appetite	33	1
Respiratory, thoracic and mediastinal disorders		
Dyspnea	31	6
Cough ^e	20	0
Infections and infestations		

Respiratory tract infection ^f	18	5
Pneumonia ^g	10	7
Nervous system disorders		
Peripheral neuropathy ^h	11	1
Headache	10	1

^a Graded per NCI CTCAE 4.0.

^b No grade 5 adverse reactions were reported.

^c Includes abdominal pain, abdominal pain upper and abdominal discomfort.

^d Includes musculoskeletal pain, back pain, arthralgia, pain in extremity, musculoskeletal chest pain, neck pain, bone pain and myalgia.

^e Includes cough and productive cough.

^f Includes upper respiratory tract infection, viral upper respiratory tract infection, respiratory tract infection and bronchitis.

^g Includes pneumonia and lung infection.

^h Includes neuropathy peripheral, neuralgia, paresthesia, peripheral sensory neuropathy, hypoesthesia, and hyperesthesia.

Clinically relevant adverse reactions in < 10% of patients who received ZEPZELCA include dysgeusia, febrile neutropenia and pneumonitis.

Table 4 summarizes the laboratory abnormalities in Study B-005.

Table 4: Select Laboratory Abnormalities (≥ 20%) Worsening from Baseline in Patients With SCLC Who Received ZEPZELCA in Study B-005

Laboratory Abnormality	ZEPZELCA ^a (n=105)	
	All Grades ^b (%)	Grades 3-4 (%)
Hematology		
Decreased leukocytes	79	29
Decreased lymphocytes	79	43
Decreased hemoglobin	74	10
Decreased neutrophils	71	46
Decreased platelets	37	7
Chemistry		
Increased creatinine	69	0
Increased alanine aminotransferase	66	4
Increased glucose	52	5
Decreased albumin	32	1
Decreased sodium	31	7
Increased aspartate aminotransferase	26	2
Decreased magnesium	22	0

^a The denominator used to calculate the rate varied from 95 to 105 based on the number of patients with a baseline value and at least one post-treatment value.

^b Graded per NCI CTCAE 4.0.

7 DRUG INTERACTIONS

7.1 Effect of Other Drugs on ZEPZELCA

Strong and Moderate CYP3A Inhibitors

Coadministration with a strong or a moderate CYP3A inhibitor increases lurbinedetin systemic exposure [see *Clinical Pharmacology (12.3)*] which may increase the incidence and severity of adverse reactions to ZEPZELCA. Avoid coadministration of ZEPZELCA with strong or moderate CYP3A inhibitors. If the coadministration of ZEPZELCA with a moderate CYP3A inhibitor cannot be avoided, consider dose reduction of ZEPZELCA, if clinically indicated [see *Dosage and Administration (2.2)*].

Strong and Moderate CYP3A Inducers

Coadministration with a strong CYP3A inducer decreases lurbinedetin systemic exposure [see *Clinical Pharmacology (12.3)*] which may reduce ZEPZELCA efficacy. Avoid coadministration of ZEPZELCA with strong or moderate CYP3A inducers.

8 USE IN SPECIFIC POPULATIONS

8.1 Pregnancy

Risk Summary

Based on animal data and its mechanism of action [see *Clinical Pharmacology (12.1)*], ZEPZELCA can cause fetal harm when administered to a pregnant woman. There are no available data to inform the risk of ZEPZELCA use in pregnant women. Intravenous administration of a single lurbinedetin dose (approximately 0.2 times the 3.2 mg/m² clinical dose) to pregnant rats during the period of organogenesis caused embryoletality (see *Data*).

Advise pregnant women of the potential risk to a fetus.

The estimated background risk of major birth defects and miscarriage for the indicated population is unknown. All pregnancies have a background risk of birth defect, loss, or other adverse outcomes. In the U.S. general population, the estimated background risk of major birth defects and miscarriage in clinically recognized pregnancies is 2 to 4% and 15 to 20%, respectively.

Data

Animal Data

In a reproductive toxicity study, administration of a single lurbinedetin dose of 0.6 mg/m² (approximately 0.2 times of the human dose of 3.2 mg/m²) to pregnant rats on Gestation Day 10 resulted in 100% post-implantation loss.

8.2 Lactation

Risk Summary

There are no data on the presence of lurbinedetin in human milk or its effects on the breastfed child or on milk production. Because of the potential for serious adverse reactions from

ZEPZELCA in breastfed children, advise women not to breastfeed during treatment with ZEPZELCA and for 2 weeks after the final dose.

8.3 Females and Males of Reproductive Potential

ZEPZELCA can cause embryoletality at doses lower than the human dose of 3.2 mg/m² [see *Use in Specific Populations (8.1)*].

Pregnancy Testing

Verify the pregnancy status of females of reproductive potential prior to initiating ZEPZELCA.

Contraception

Females

Advise female patients of reproductive potential to use effective contraception during treatment with ZEPZELCA and for 6 months after the final dose.

Males

Advise males with a female sexual partner of reproductive potential to use effective contraception during treatment with ZEPZELCA and for 4 months after the final dose.

8.4 Pediatric Use

The safety and effectiveness of ZEPZELCA in pediatric patients have not been established.

8.5 Geriatric Use

Of the 105 patients with SCLC administered ZEPZELCA in clinical studies, 37 (35%) patients were 65 years of age and older, while 9 (9%) patients were 75 years of age and older. No overall difference in effectiveness was observed between patients aged 65 and older and younger patients.

There was a higher incidence of serious adverse reactions in patients \geq 65 years of age than in patients $<$ 65 years of age (49% vs. 26%, respectively). The serious adverse reactions most frequently reported in patients \geq 65 years of age were related to myelosuppression and consisted of febrile neutropenia (11%), neutropenia (11%), thrombocytopenia (8%), and anemia (8%) [see *Adverse Reactions (6.1)*].

8.6 Hepatic Impairment

The effect of moderate or severe hepatic impairment (total bilirubin $>$ 1.5 \times ULN and any AST) on the pharmacokinetics of lurbinectedin has not been studied. No dose adjustment of ZEPZELCA is recommended for patients with mild hepatic impairment (total bilirubin \leq ULN and AST $>$ ULN, or total bilirubin 1.0-1.5 \times ULN and any AST)

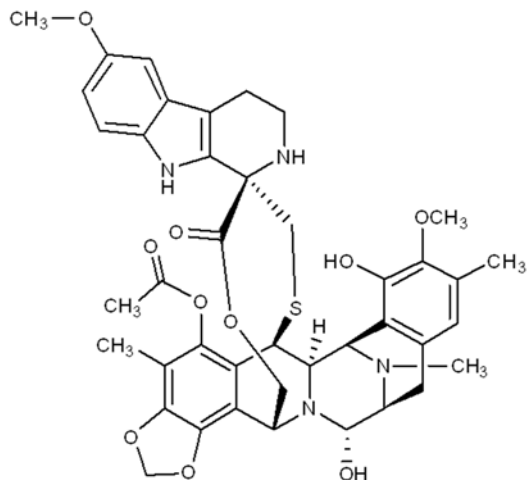
[see *Clinical Pharmacology (12.3)*].

11 DESCRIPTION

ZEPZELCA is an alkylating drug. The chemical name of ZEPZELCA (lurbinectedin) is (1'R,6R,6aR,7R,13S,14S,16R)-8,14-dihydroxy-6',9-dimethoxy-4,10,23-trimethyl-19-oxo-

2',3',4',6,7,9',12,13,14,16-decahydro-6aH-spiro[7,13-azano-6,16-(epithiopropanooxymethano) [1,3]dioxolo[7,8]isoquinolino[3,2-b][3]benzazocine-20,1'-pyrido[3,4-b]indol]-5-yl acetate.

The molecular formula is C₄₁H₄₄N₄O₁₀S. The molecular weight is 784.87g/mol, and the chemical structure is:



ZEPZELCA for injection 4 mg is supplied as a lyophilized powder in a single-dose vial for reconstitution for intravenous use. The ZEPZELCA lyophilized formulation is comprised of 4 mg lurbinectedin, sucrose (800 mg), lactic acid (22.1 mg), and sodium hydroxide (5.1 mg). Before use, the lyophilizate is reconstituted by addition of 8 mL Sterile Water for Injection USP, yielding a solution containing 0.5 mg/mL lurbinectedin (the calculated concentration is 0.47 mg/mL based on the final volume of 8.5 mL).

12 CLINICAL PHARMACOLOGY

12.1 Mechanism of Action

Lurbinectedin is an alkylating drug that binds guanine residues in the minor groove of DNA, forming adducts and resulting in a bending of the DNA helix towards the major groove. Adduct formation triggers a cascade of events that can affect the subsequent activity of DNA binding proteins, including some transcription factors, and DNA repair pathways, resulting in perturbation of the cell cycle and eventual cell death.

Lurbinectedin inhibited human monocyte activity in vitro and reduced macrophage infiltration in implanted tumors in mice.

12.2 Pharmacodynamics

Lurbinectedin exposure-response relationships and the pharmacodynamic time-course for efficacy have not been fully characterized.

Increased incidence of Grade 4 neutropenia and Grade \geq 3 thrombocytopenia were observed with increased lurbinectedin exposure.

Cardiac Electrophysiology

No large mean increase in QTc (i.e. > 20 ms) was detected following treatment with ZEPZELCA at the recommended dose of 3.2 mg/m².

12.3 Pharmacokinetics

Following the approved recommended dosage, geometric means (%CV) of plasma C_{max} and AUC_{0-inf} , were 107 $\mu\text{g/L}$ (79%) and 551 $\mu\text{g}\cdot\text{h/L}$ (94%), respectively. No accumulation of lurbinectedin in plasma is observed upon repeated administrations every 3 weeks.

Distribution

The volume of distribution of lurbinectedin at steady state is 504 L (39%). Plasma protein binding is approximately 99%, to both albumin and α -1-acid glycoprotein.

Elimination

The terminal half-life of lurbinectedin is 51 hours. Total plasma clearance of lurbinectedin is 11 L/h (50%).

Metabolism

Lurbinectedin is metabolized by CYP3A4, in vitro.

Excretion

After a single dose of radiolabeled lurbinectedin administration, 89% of the radioactivity was recovered in feces (< 0.2% unchanged) and 6% in urine (1% unchanged).

Specific Populations

No clinically significant differences in the pharmacokinetics of lurbinectedin were identified based on age (18-85 years), sex, body weight (39-154 kg), mild to moderate renal impairment (CL_{cr} 30 to 89 mL/min) or mild hepatic impairment (total bilirubin \leq ULN and $AST >$ ULN, or total bilirubin between $1.0 - 1.5 \times$ ULN and any AST). The effects of severe renal impairment ($CL_{cr} <$ 30 mL/min) and moderate or severe hepatic impairment (total bilirubin $>$ $1.5 \times$ ULN and any AST) on the pharmacokinetics of lurbinectedin have not been studied.

Drug Interactions Studies

Dedicated clinical drug-drug interaction studies with CYP3A modulators have not been conducted with lurbinectedin.

In vitro Studies

Cytochrome P450 (CYP) Enzymes: Lurbinectedin is metabolized by CYP3A4. Lurbinectedin is not an inhibitor of CYP1A2, CYP2B6, CYP2C8, CYP2C9, CYP2C19, CYP2D6, CYP2E1, or CYP3A4. Lurbinectedin is not an inducer of CYP1A2 or CYP3A4.

Transporter Systems: Lurbinectedin is a substrate of MDR1, but is not a substrate of OATB1P1, OATP1B3, OCT1, or MATE1. Lurbinectedin inhibits MDR1, OATP1B1, OATP1B3, and OCT1 but not BCRP, BSEP, MATE1, OAT1, OAT3, or OCT2.

13 NONCLINICAL TOXICOLOGY

13.1 Carcinogenesis, Mutagenesis, Impairment of Fertility

Carcinogenicity testing of lurbinectedin has not been performed. Lurbinectedin is genotoxic to mammalian cells in the presence and absence of metabolic activation. Lurbinectedin was not mutagenic in vitro in a bacterial reverse mutation (Ames) assay.

Fertility studies with lurbinectedin were not performed. There were no findings in reproductive organs in general toxicology studies in rats, dogs, or monkeys; however, the highest doses and exposures in these studies were all at levels lower than those at the human dose of 3.2 mg/m².

14 CLINICAL STUDIES

PM1183-B-005-14 (Study B-005; NCT02454972) is a multicenter, open-label, multi-cohort trial evaluating ZEPZELCA as a single agent in patients with advanced or metastatic solid tumors. A cohort of patients with small cell lung cancer (SCLC) with disease progression on or after platinum-based chemotherapy received ZEPZELCA 3.2 mg/m² by intravenous infusion every 21 days (one cycle). Patients received a median of 4 cycles of ZEPZELCA (range 1 to 24 cycles). The trial excluded patients with central nervous system (CNS) involvement, grade ≥ 3 dyspnea, daily intermittent oxygen requirement, hepatitis or cirrhosis, and immunocompromised patients. Tumor assessments were conducted every 6 weeks for the first 18 weeks and every 9 weeks thereafter. The major efficacy outcome measure was confirmed investigator-assessed overall response rate (ORR). Additional efficacy outcome measures included duration of response (DoR), and an Independent Review Committee (IRC) assessed ORR using Response Evaluation Criteria in Solid Tumors (RECIST v1.1).

A total of 105 patients with SCLC who progressed on or after platinum-based chemotherapy were enrolled. The median age was 60 years (range: 40 to 83) with 65% of patients < 65 years and 35% of patients ≥ 65 years, and 60% were male. The majority (75%) of the patients were White, 1% were Asian, 1% were Black and 23% were not reported. Baseline ECOG performance status was 0 or 1 in 92% of patients, and 92% were former/current smokers. All patients received at least one line of platinum-based chemotherapy (range 1-2 lines), and prior radiotherapy had been administered to 71% of patients. Eight patients (8%) had prior immunotherapy in addition to platinum-based chemotherapy. Sixty patients (57%) had platinum-sensitive SCLC, defined as recurrence or progression ≥ 90 days after the last dose of platinum-containing therapy (chemotherapy free interval [CTFI] ≥ 90 days). The remaining 45 patients had platinum-resistant SCLC, defined as recurrence or progression < 90 days after the last dose of platinum-containing therapy (CTFI < 90 days).

Table 5 summarizes investigator-assessed and independent review committee assessed key efficacy measures in all patients and in platinum-resistant and platinum-sensitive subgroups.

Table 5: Efficacy Results in SCLC Cohort of Study B-005

	ZEPZELCA All Patients (n=105)	ZEPZELCA CTFI <90 days (n=45)	ZEPZELCA CTFI ≥90 days (n=60)
Investigator Assessed Response^a			
Overall Response Rate (95% CI)	35% (26%, 45%)	22% (11%, 37%)	45% (32%, 58%)
Complete response	0%	0%	0%
Partial response	35%	22%	45%
Duration of Response			
Median in months (95% CI)	5.3 (4.1, 6.4)	4.7 (2.6, 5.6)	6.2 (3.5, 7.3)
% with ≥6 months ^b	35%	10%	44%
Independent Review Committee Assessed Response^a	All Patients (n=105)	CTFI <90 days (n=45)	CTFI ≥90 days (n=60)
Overall Response Rate (95% CI)	30% (22%, 40%)	13% (5%, 27%)	43% (31%, 57%)
Complete response	0%	0%	0%
Partial response	30%	13%	43%
Duration of Response			
Median in months (95% CI)	5.1 (4.9, 6.4)	4.8 (2.4, 5.3)	5.3 (4.9, 7.0)
% with ≥6 months ^b	25%	0%	31%

CI: confidence interval, CTFI: chemotherapy free interval.

^a Confirmed overall response rate.

^b Based on observed duration of response.

15 REFERENCES

1. "OSHA Hazardous Drugs." OSHA. <http://www.osha.gov/SLTC/hazardousdrugs/index.html>

16 HOW SUPPLIED/STORAGE AND HANDLING

How Supplied

ZEPZELCA (lurbinectedin) for injection is supplied as a sterile, preservative-free, white to off-white lyophilized powder in a single-dose clear glass vial. Each carton (NDC 68727-712-01) contains 4 mg in one single-dose vial.

Storage and Handling

Store refrigerated at 2° to 8°C (36° to 46°F).

ZEPZELCA is a hazardous drug. Follow applicable special handling and disposal procedures¹.

17 PATIENT COUNSELING INFORMATION

Advise the patient to read the FDA-approved patient labeling (Patient Information).

Myelosuppression

Advise patients to immediately contact their healthcare provider for fever, other signs of infection, unusual bruising, bleeding, tiredness or pallor [see *Warnings and Precautions (5.1)*].

Hepatotoxicity

Advise patients to contact their healthcare provider immediately for signs and symptoms suggestive of hepatotoxicity [see *Warnings and Precautions (5.2)*].

Embryo-Fetal Toxicity

- Advise pregnant women and females of reproductive potential of the potential risk to a fetus. Advise females to inform their healthcare provider of a known or suspected pregnancy [see *Warnings and Precautions (5.3)* and *Use in Specific Populations (8.1)*].
- Advise females of reproductive potential to use effective contraception during treatment with ZEPZELCA and for 6 months after the final dose [see *Use in Specific Populations (8.3)*].
- Advise males with female partners of reproductive potential to use effective contraception during treatment with ZEPZELCA and for 4 months after the final dose [see *Use in Specific Populations (8.3)*].

Lactation

Advise women not to breastfeed during treatment with ZEPZELCA and for at least 2 weeks after the final dose [see *Use in Specific Populations (8.2)*].

Drug Interactions

Advise patients to inform their healthcare providers of all concomitant medications, herbal and dietary supplements. Advise patients to avoid grapefruit products during treatment with ZEPZELCA [see *Drug Interactions (7.1)*].

Distributed by:

Jazz Pharmaceuticals, Inc.
Palo Alto, CA 94304

Under license from Pharma Mar, S.A.

Protected by U.S. Patent No. 7,763,615

PATIENT INFORMATION
ZEPZELCA™ (zep zel' kah)
(lurbinectedin)
for injection

What is ZEPZELCA?

- ZEPZELCA is used to treat adults with a kind of lung cancer called small cell lung cancer (SCLC). ZEPZELCA may be used when your lung cancer:
 - has spread to other parts of the body (metastatic), **and**
 - you have received treatment with chemotherapy that contains platinum, and it did not work or is no longer working.

It is not known if ZEPZELCA is safe and effective in children.

Before receiving ZEPZELCA, tell your healthcare provider about all of your medical conditions, including if you:

- have liver or kidney problems.
- are pregnant or plan to become pregnant. ZEPZELCA can harm your unborn baby.

Females who are able to become pregnant:

- Your healthcare provider should do a pregnancy test before you start treatment with ZEPZELCA.
- You should use effective birth control (contraception) during treatment with and for 6 months after your final dose of ZEPZELCA.
- Tell your healthcare provider right away if you become pregnant or think that you are pregnant during treatment with ZEPZELCA.

Males with female partners who are able to become pregnant should use effective birth control during treatment with and for 4 months after your final dose of ZEPZELCA.

- are breastfeeding or plan to breastfeed. It is not known if ZEPZELCA passes into your breastmilk. Do not breastfeed during treatment with ZEPZELCA and for 2 weeks after your final dose of ZEPZELCA. Talk to your healthcare provider about the best way to feed your baby during treatment with ZEPZELCA.

Tell your healthcare provider about all the medicines you take, including prescription and over-the-counter medicines, vitamins, and herbal supplements. Certain other medicines may affect how ZEPZELCA works. Know the medicines you take. Keep a list of them to show your healthcare provider and pharmacist when you get a new medicine.

How will I receive ZEPZELCA?

- ZEPZELCA is given by an intravenous (IV) infusion into a vein over 60 minutes.
- ZEPZELCA is usually given every 21 days.
- Before each treatment with ZEPZELCA, you may receive medicines to help prevent nausea and vomiting or make it less severe.
- Your healthcare provider will decide how long you will continue treatment with ZEPZELCA.
- Your healthcare provider may do certain tests during your treatment with ZEPZELCA to check you for side effects, and to see how well you respond to the treatment.

What should I avoid while using ZEPZELCA?

- Avoid eating or drinking grapefruit, or products that contain grapefruit juice during treatment with ZEPZELCA.

What are the possible side effects of ZEPZELCA?

- **ZEPZELCA can cause serious side effects, including:**
- **Low blood cell counts.** Low blood counts including low neutrophil counts (neutropenia) and low platelet counts (thrombocytopenia) are common with ZEPZELCA, and can also be severe. Some people with low white blood cell counts may get fever, or an infection throughout the body (sepsis), that can cause death. Your healthcare provider should do blood tests before you receive each treatment with ZEPZELCA to check your blood cell counts.

Tell your healthcare provider right away if you develop:

- fever or any other signs of infection
- tiredness
- unusual bruising or bleeding
- pale colored skin

- **Liver problems.** Increased liver function tests are common with ZEPZELCA, and can also be severe. Your healthcare provider should do blood tests to check your liver function before you start and during treatment with ZEPZELCA.

Tell your healthcare provider right away if you develop symptoms of liver problems including:

- loss of appetite
- nausea or vomiting
- pain on the right side of your stomach-area (abdomen)

Your healthcare provider may temporarily stop treatment, lower your dose, or permanently stop ZEPZELCA if you develop low blood cell counts or liver problems during treatment with ZEPZELCA.

The most common side effects of ZEPZELCA include:

- tiredness
- low white and red blood cell counts
- increased kidney function blood test (creatinine)
- increased liver function blood tests
- increased blood sugar (glucose)
- nausea
- decreased appetite
- muscle and joint (musculoskeletal) pain
- low level of albumin in the blood
- constipation
- trouble breathing
- low levels of sodium and magnesium in the blood
- vomiting
- cough
- diarrhea

These are not all of the possible side effects of ZEPZELCA. Call your doctor for medical advice about side effects. You may report side effects to FDA at 1-800-FDA-1088.

General information about the safe and effective use of ZEPZELCA.

Medicines are sometimes prescribed for purposes other than those listed in a Patient Information leaflet. If you would like more information, talk with your healthcare provider. You can ask your pharmacist or healthcare provider for information about ZEPZELCA that is written for health professionals.

What are the ingredients in ZEPZELCA?

Active ingredient: lurbinectedin

Inactive ingredients: sucrose, lactic acid and sodium hydroxide.

Distributed by: Jazz Pharmaceuticals, Inc.
Palo Alto, CA 94304

Under license from Pharma Mar, S.A.

ZEPZELCA is a trademark of Pharma Mar, S.A.

For more information, go to www.ZEPZELCA.com or call 1-800-520-5568.

This Patient Information has been approved by the U.S. Food and Drug Administration.

Issued: 06/2020